

## Quick start guide

# MF668+ USB Modem (21 Mbps High Speed)

Read these quick and easy instructions to get started.



### Check your system requirements

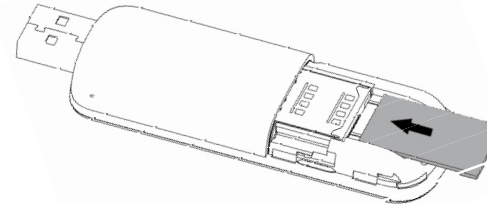
1. USB port x 1 (USB 1.0 or 2.0\*)
  2. System Requirements:
    - a. PC – Windows 7, Vista, XP.
    - b. Mac - OSX 10.4.11 and above.
- |                  |                       |
|------------------|-----------------------|
| <b>CPU</b>       | 1GHz Pentium or above |
| <b>Hard Disk</b> | 20GB or above         |
| <b>RAM</b>       | 512M or above         |
| <b>Display</b>   | 800 x 600 minimum     |
3. You need to have **Administrator** rights to install and run the software.
  4. We suggest you switch off your anti-virus software before installing the USB modem. In some cases protection software can prevent automatic installation. It is possible to start the installation process manually by clicking the Autorun icon when it appears.

### Tips

- \* USB 2.0 ports are preferred because they are much faster.
- Identify the type of port on your PC and use version 2.0 ports.
- Use the USB extender cable to obtain optimum reception.
- There are 3 stages of installation:
  - i. Modem insertion, detection and installation of USB driver.
  - ii. Install shield installation of Connection Manager software.
  - iii. Connection Manager launch and modem driver installation.

### 1. Insert your SIM Card into the USB modem:

- Open the modem back cover to access the SIM and MicroSD™ slot.



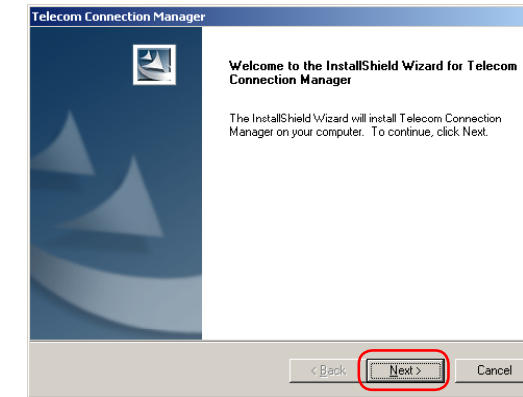
- Insert the SIM card as shown with the gold contacts facing down and the bevelled corner on the outside edge of the modem.
- Push the SIM card in as far as it will go and replace the modem cover.

### 2. Connect the USB modem to your PC:

- The computer must be switched ON and fully booted up.
- Plug in the USB modem. The computer will start the Install Shield Wizard.
- If your security settings prevent autorun then start the process manually.
  - **Windows users:** Browse the Telecom Modem folder and double click **Install.exe**.
  - **MAC users:** Open the CD-ROM, Telecom Modem, and double click **Connection Manager**.
- Follow the Install Shield prompts to complete the installation.
- The Connection Manager software will start automatically and continue installing.

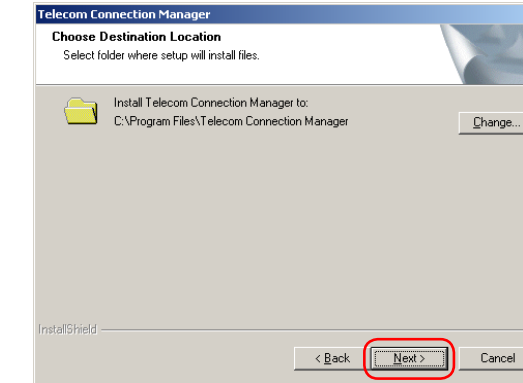
### 3. Installation Details

Screen shots are shown for Windows XP system. Other systems will follow a similar but not necessarily identical process:



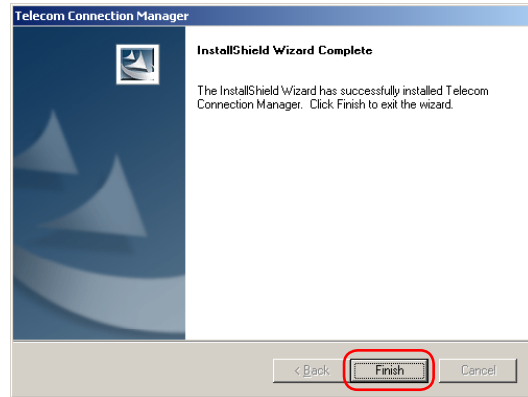
Click '**Next**' to continue

### Installation continued...



Click '**Next**' to accept the default location or press '**Change**' to specify your own path. The installation takes a few minutes to complete.

#### Installation continued...

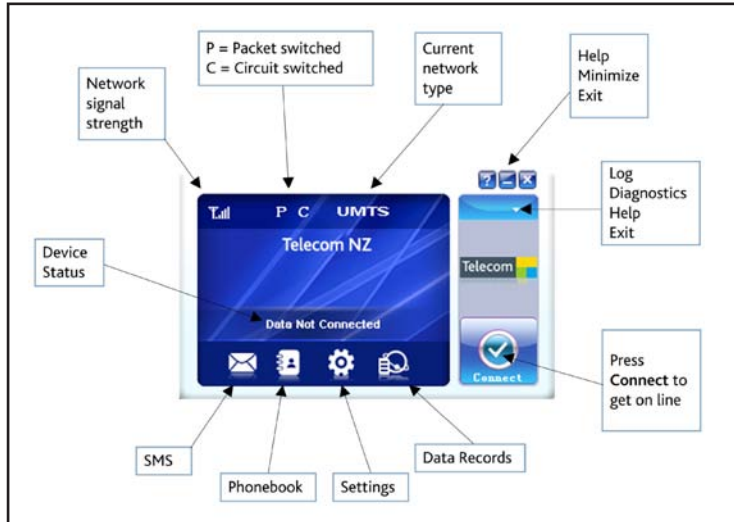


Press '**Finish**' to complete - The Connection manager launches and installs the drivers:



#### 4. Telecom Connection Manager - Press Connect to get on line...

When the installation is complete the Connection Manager will launch and continue installing the drivers for a few minutes. After the device has finished initialising press **Connect** to get on line.



#### 5. LED status indication

LED Indicator	Modem status
Red	Offline. Not registered on the network
Green solid	Registered on the 2G network (roaming)
Green blinking	Data active on the 2G network (roaming)
Blue solid	Registered on the 3G network
Blue blinking	Data active on the 3G network

#### 6. Troubleshooting Tips

In the event of installation or connection issues try the following suggestions:

1. Install and test the modem in another computer
2. Check your SIM card is working in another device – eg mobile phone
3. Insert a known working SIM card into your modem
4. Confirm your account is active – contact your service provider
5. Uninstall the modem and re-install using Windows 'Safe Mode' – consult a PC technician for help if required (PC only)
6. Advanced users can check Device Manager to make sure the drivers are installed correctly. The full software installation is available on our website <a href="http://www.zte.co.nz">www.zte.co.nz</a>

#### 7. Using the Modem as a Mass Storage Device

You can insert a MicroSD™ memory card up to 8GB to use the modem as a mass storage device.

- Safely remove your modem from your computer.
- Open the modem back cover to access the MicroSD™ slot.
- There is a diagram showing the correct orientation of the MicroSD™ card printed on the top of the MicroSD™ slot.
- Check the correct orientation and carefully insert the MicroSD™ card.
- Replace the modem cover and insert your device into your computer.
- The MicroSD™ card will appear as an external drive on your computer system.
- Always handle memory cards with care and avoid static discharge.

#### 8. Safe removal of the modem from your computer

Whenever you need to remove the modem from your computer please close the Connection Manager and use **Safely Remove Hardware** or **Eject** for MAC OS.

If you remove the device while the Connection Manager is still active it is possible to corrupt the local Phonebook file.

#### 9. Uninstall the modem software

**Windows:** Start > Programs > Telecom Connection Manager > Uninstall.

**MAC OS X:** Applications > Uninstall Telecom Connection Manager.