

skinny

Skinny Dongle

Quick Start Guide

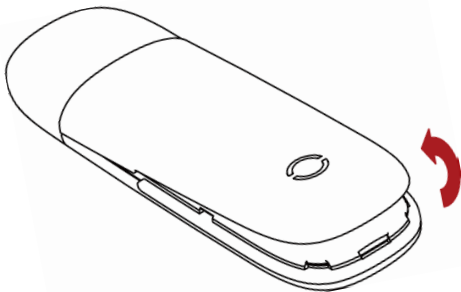


ZTE

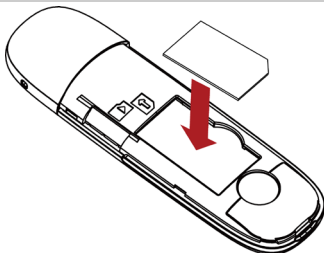
Skinny Dongle 2nd Edition © ZTE April 2012

1. Open the modem top cover

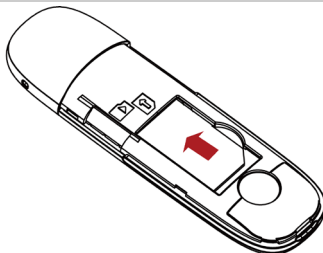
- Lift to open the modem top cover to access the SIM slot:



2. Insert your SIM card into the USB modem:



Place the SIM card with the gold contacts facing down as shown.



Slide the SIM card fully into the slot as shown.

Optional:

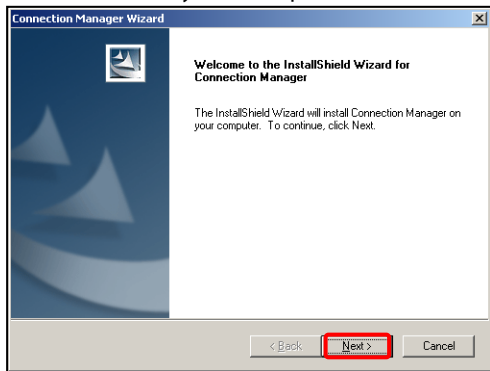
Insert a microSD card if you want to use for external storage.

3. Connect the USB modem to your computer:

- The computer must be switched ON and operational
- Plug in the USB modem. The computer will start the Install Shield Wizard
- If the installation does not start automatically:
- **Windows users:** Browse My Computer > **ZTEMODEM**, double click **Autorun.exe** to start the installation manually.
- **MAC users:** Double click the **ZTEMODEM** icon on the desktop.
- Follow the installation prompts to complete the installation
- The Connection Manager software will start automatically and continue installing.

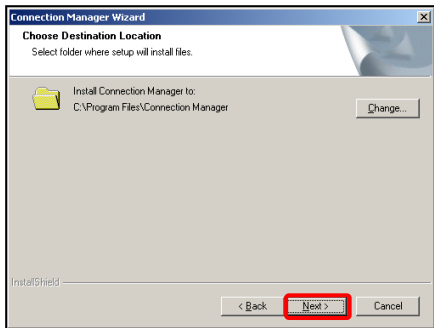
4. Installation details

Screen shots are shown for Windows 7. Other systems will follow a similar but not necessarily identical process.



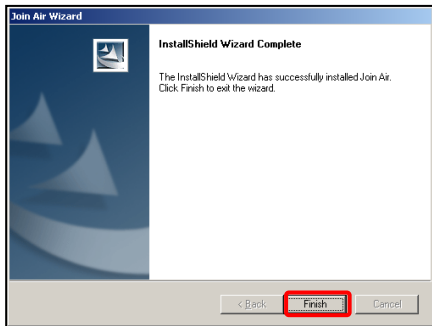
Click '**Next**' to continue

Installation continued...



Click '**Next**' to accept the default location or press '**Change**' to specify your own path. The installation takes a few minutes to complete...

Installation continued...



Press '**Finish**' to complete - The drivers continue to install for a few minutes...

5. Connection Manager - Press Connect to get on line...



LED indicator	Modem Status
Red	Offline. Not registered on the network
Green solid	Registered on the 2G network
Green blinking	Active data transfer on the 2G network
Blue solid	Registered on the 3G network
Blue blinking	Active data transfer on the 3G network

6. Using the modem as a mass storage device

Insert a microSD™ memory card up to 32GB to use as a mass storage device.

- Open the top cover to access the microSD™ slot
- Check the correct orientation and carefully insert the microSD™ card
- The microSD™ card will appear as an external drive on your computer

7. Safe removal of the modem from your computer

To remove the modem from your computer please close the Connection Manager and use **Safely Remove Hardware** or **Eject** for MAC OS.

If you remove the device while the Connection Manager is still active it may corrupt the local Phonebook file.

8. Uninstall the modem software

Windows: Start > Programs > Connection Manager > Uninstall

MAC OS X: Applications > Uninstall Connection Manager

9. Troubleshooting tips – In the event of issues:

1. Install and test the modem in another computer
2. Check your SIM card is working in another device – eg mobile phone
3. Insert a known working SIM card into your modem
4. Confirm your account is active by contacting your service provider
5. Uninstall the modem and re-install using Windows 'Safe Mode' – consult a PC technician for help if required (PC only)
6. With the modem inserted check Device Manager to make sure the drivers are installed. See zte.co.nz for more help.